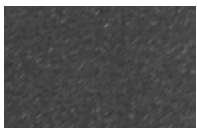


Powdercoat Steel

Add sparkle and shine to your décor with our broad selection of long-lasting powdercoat options for steel. From sleek silver to basic black, our powdercoated steel fuses function and durability with elegance and style.

Colors:



Anthracite Wrinkle



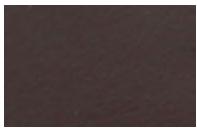
Black Wrinkle



Resolve Silver Metallic



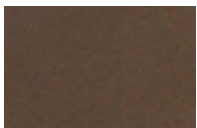
Anodized Nickel



Roman Bronze



Gold Vein



Brown



Copper Vein



Almost Chrome

